



BACKUP Health – private sector engagement for enhanced vaccine and pharma production in Africa

Manuel Batz, Component Head, Vaccine and Pharmaceutical production, BACKUP Health

October 18th 2024, Sao Paulo

giz Deutsche Gesellschaft
für Internationale
Zusammenarbeit (GIZ) GmbH

BACKUP Health Vaccine Component in a nutshell

1. TESS MAV+



- **Provision of embedded experts** to the PHAHM Secretariat
- **Study tours** for the PAVM staff and AU Member States
- Communications for TEI MAV+



2 Mio. EUR (BMZ, 01/2023-12/2025)
3.3 Mio. EUR (EU, 01/2023-12/2025)



2. BMZ Vx component – focus private sector engagement

- Focus on **market design, technology transfer** and – the overarching – **engagement with the private sector**, incl. grant to **WHO LPA**
- Support to the **mRNA Technology Transfer Programme** (grant to **WHO/MPP**)
- **Coordination and synchronization** of different actors in the pharmaceutical sector



9.2 Mio. EUR (BMZ, 04/2021-12/2023)
5 Mio. EUR (BMZ, 12/2023 – 03/2026)



Wesley Ronoh
Market Shaping
Expert

Market design & demand intelligence



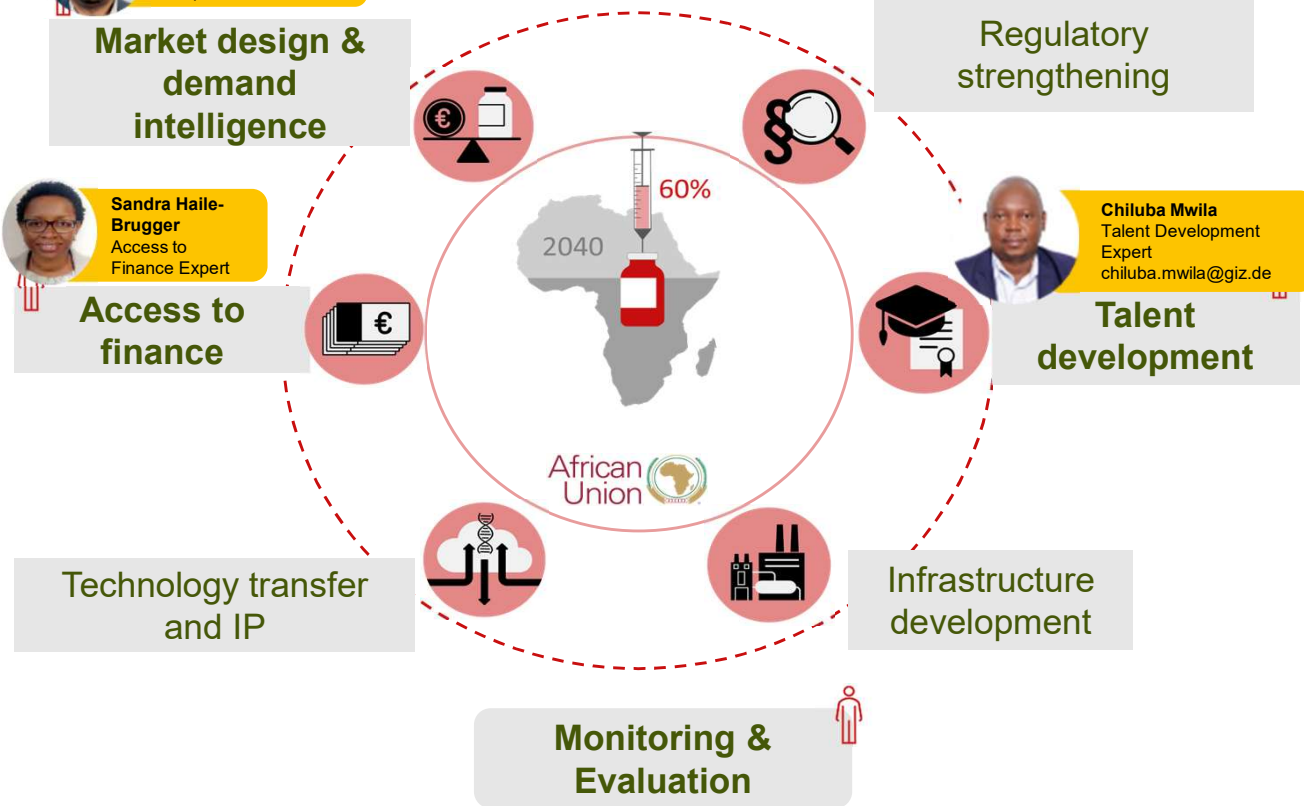
Sandra Haile-Brugger
Access to
Finance Expert

Access to finance



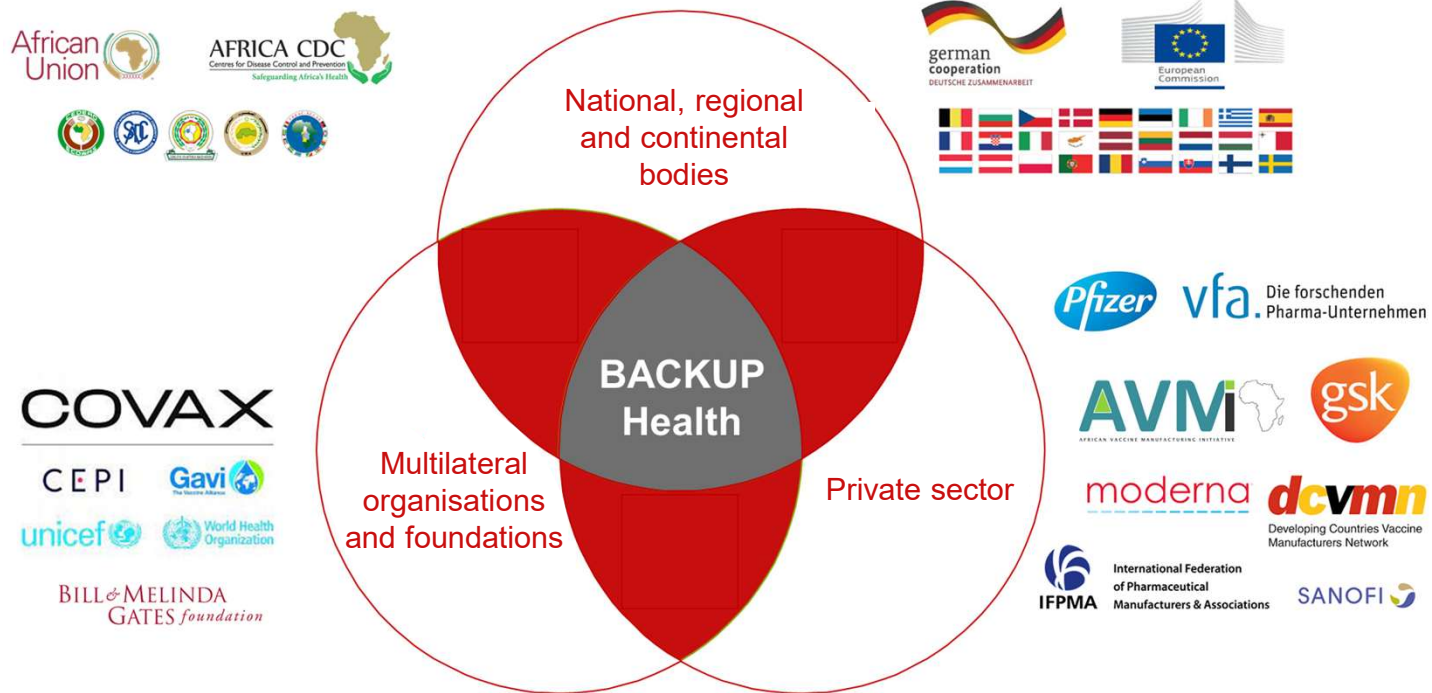
Chiluba Mwila
Talent Development
Expert
chiluba.mwila@giz.de

Talent development



*Platform for Harmonized African Health Products Manufacturing (PHAHM) since February 2024

... **BACKUP Health** is at the nexus of politics, the private sector and multilateral organisations.



GIZ BACKUP Health – engaging the private sector



Annual conference on Sustainable Investment in African Vaccine Industry

- 2nd edition of private sector event in June 2024, 250 Participants: 130 private sector representatives, 12 Industry associations, 7 financial institutions
- High-level attention (President Ruto)
- **Unique conference format for private sector value chain actors**



Study & Business Case Simulation Tool for sustainable investment

- Assessing financial viability based on a costing simulation: Fill & Finish operations in Africa vs. import of products
- **Demonstrating that input costs have huge impact of financial viability of investments**